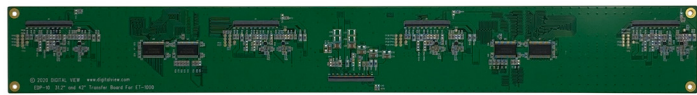
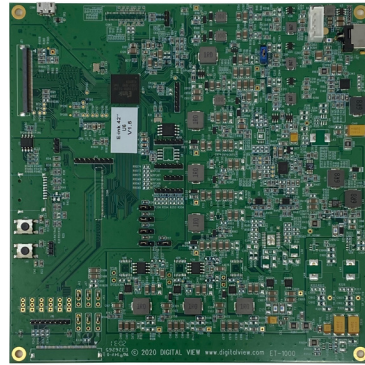


Low Power - Solar Suitable

Reflective - Sunlight Readable

- Outdoor signage
- Mobile signage



**ET-1000 Interface Board:** Designed specifically to support the E Ink 32" and 42" monochrome panels, the ET-1000 accepts bitmap images transferred over a USB connection. The images are then written to the panel immediately. The board has fast startup and low standby power consumption of 0.6W.

Any media source that can transmit a BMP image over USB is suitable, for example a PC, Android board, Raspberry Pi, Arduino.

Send images from Raspberry Pi, Android or PC, transfer of an image to the display is handled by an application:

- Custom developed using the ET-1000 API
- Demo PC (Windows) based application.

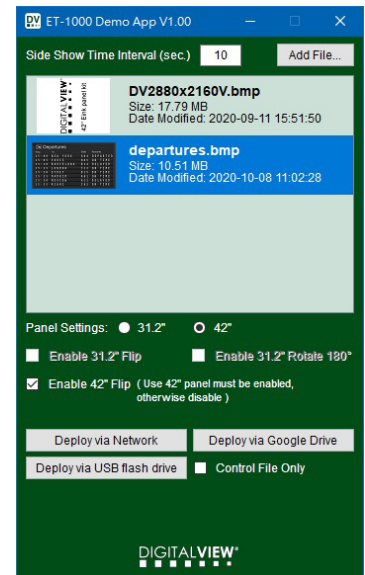
Part numbers:

- ET-1000 kit for 32" # 546023910-3
- ET-1000 kit for 42" # 546023900-3



CALL:

- USA: +1.408.782.7773
- Europe: +44(0)207.631.2150
- Asia: +852.2861.3615



Windows 10 software to transfer files and create a playlist.

Supports transfer via USB, network or Google Drive.